



Used for multiple scenario in DC, featuring network scaling, automation, programmability and real-time visibility.

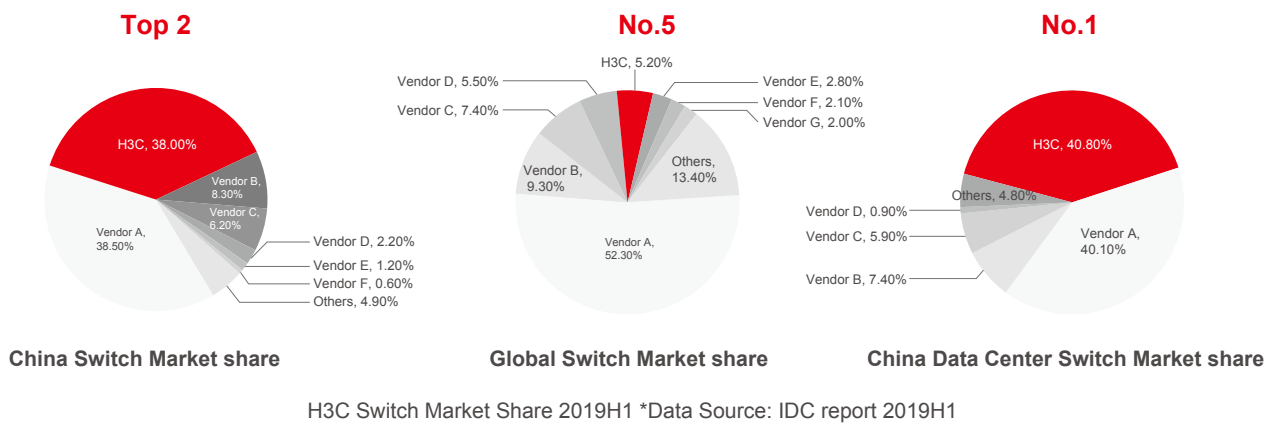
| H3C Data Center Switches

Product Overview

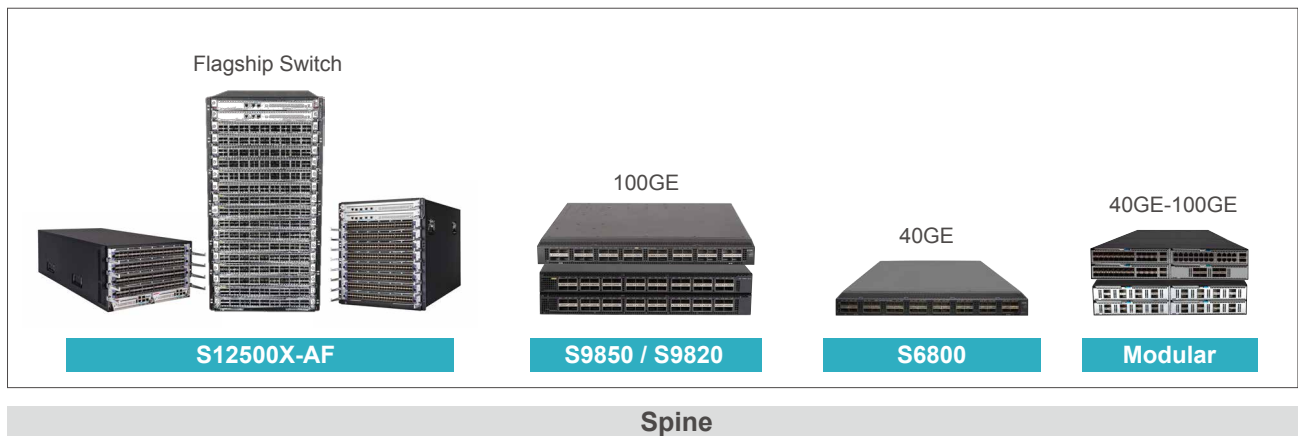
After over 20 years of networking innovation, research and development, H3C has accumulated significant industry-leading Ethernet-related intellectual property and numerous patents. With a broad range of switch series, H3C's options can cover your data center networking needs.

For data center applications, scalability, automation, programmability, visibility form the main pillars of H3C's approach, which provides broad and automatic deployment option, open architecture and intelligent O&M.

H3C Data Center Switch Market Position



Portfolio of H3C Data Center Spine Switch



H3C Data Center Spine Switch Feature



Advanced Architecture

- 12500X-AF CLOS orthogonal and Midplane-free design.
 - High heat dissipation efficiency
 - Smoothly upgrade LPU from 100G to 400G
- Innovative three row port design.



High Performance

- Maximum 768*100G port in Single Chassis S12516X-AF
- Compact high density 100G box switch 9850, 9820
- Lossless Ethernet network RoCE solution



Virtualization

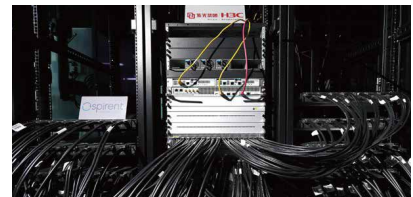
- N:1 IRF Stack (Intelligent Resilient Framework).
- 1:N MDC (Multitenant Device Context).



Automation & Programmability

- SDN, Ansible, Chef, Puppet
- Openflow, Netconf, OVSDB

Spirent Communications (LSE: SPT), a leader in the Ethernet testing and assurance industry, recently announced the successful completion of a large-scale 400G validation with 72 ports of 400GE in collaboration with H3C, which has become the industry's first ever large-scale 400G test with SRv6.



H3C S12500 Data Center Switch

Portfolio of H3C Data Center Leaf Switch



H3C Data Center Leaf Switch Feature



Quality

- Lossless Ethernet network RoCE solution
- PFC, ECN, ETS, DCBX, VIQ, DPP, DLB



Visibility

- Chip Visualization
- Buffer Visualization
- Traffic Visualization
- GRPC, ERSPAN, INT



Virtualization

- N:1 IRF Stack (Intelligent Resilient Framework)
- Link aggregation cross device technology DRNI

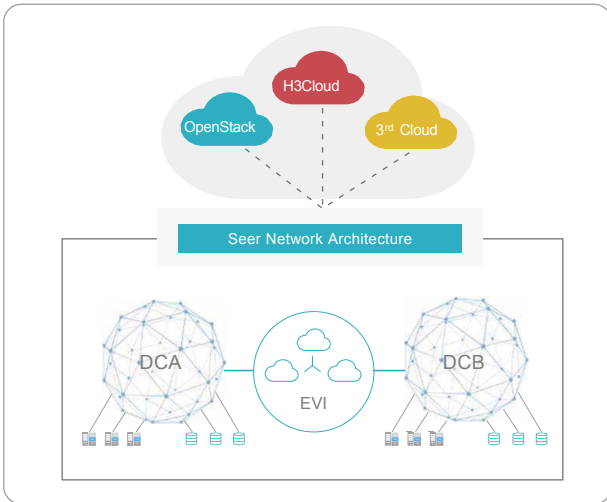


Automation & Programmability

- SDN, Ansible, Chef, Puppet
- Openflow, Netconf, OVSDB

Application-Driven Data Center Solution

1000 + AD-DC successful cases in carrier, government, enterprise, finance and public sector.



Automation

Network equipment plug & play.
Automated deployment and provisioning.



Granular Security

Layer 4 through Layer 7 on-demand end-to-end security protection.



Intelligent O&M

Centralized and visible operation and management.
Intelligent perception and diagnosis.



Standard & Open

Standard and flexible Spine-Leaf network architecture.
Compatible with OpenStack (KVM/O).

H3C Data Center Switch Summary

Large Scale DC Spine



Scenario

High density 40G/100G
High performance
Large entry for DCI



HB LPU

Mainstream, 10G/40G/100G
ADDC solution recommended



HF LPU

Big entry 2M IPv4 FIB, DCI

Middle-Small Scale DC Spine



Scenario

High density 100G



Scenario

Modular Spine



Scenario

Small scale DC spine

Leaf

10G TOR

Series	Scenario
S6805	Visibility ToR
S6800	Mainstream ToR
S6860	Cost effective ToR
S6890	Deep buffer

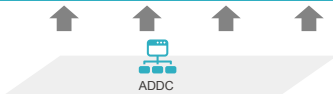
25G TOR

Series	Scenario
S6850	25G access with Visibility feature

Modular TOR



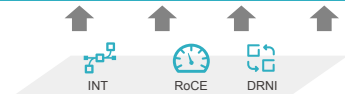
Product Platform



DC Solution



Open Platform



Data Center Feature



High Performance & Scalability



Superb Automation



Real-time Visibility



Plural Programmability

Contact Us

Beijing Headquarters

Address: Tower 1, LSH Center, No.8 Guangshun South Street,
Chaoyang District, Beijing, PR CHINA
Zip Code: 100102

Hangzhou Headquarters

Address: No.466 Changhe Road,
Binjiang District, Hangzhou, Zhejiang Province, PR CHINA
Zip Code: 310052



Copyright ©2020 H3C. All rights reserved.

Disclaimer: H3C endeavors to provide accurate information in this brochure. Nevertheless, there may be technical errors and/or typos. H3C assumes no responsibility for any inaccuracy of information that may contain in this brochure. H3C retains the right to modify the contents contained herein without any prior notice or prompt.

customer service hotline
400-810-0504



www.h3c.com/en/