

Athesi

Specialist in business
mobility solutions



Athesi, a product range adapted to all sectors of activity

Food manufacturing Maintenance
Smart Industry Real Estate Automotive
Government Transportation and Logistics
Emergency services Electric services Energy
Army Manufacturing Police Civil engineering
Engineering Warehouse Management Financial
Defence Public safety Construction Pharmaceutical
Catering Field Operations Oil & Gas Telecoms
Distribution Healthcare Logistics Public Sector
Retail Services Utilities Hospitality Security

Athesi, international distribution



Production Certifications





About Athesi

Founded in 2005, Athesi is a French manufacturer located in Paris area. With a strong experience on Automatic Identification and Business Mobility market since 1990, Athesi offers a wide product range for professionals: barcode scanners, rugged smartphones, rugged tablets, RFID solutions.....

As a specialist in professional hardware solutions, Athesi does everything possible to ensure that its products meet business requirements as closely as possible. Athesi is committed to deliver solutions that help customers capture and manage business data.

Focused on its expertise as a hardware designer, Athesi has set up an international network of channel partners, leaders in mobile computing and integration. Through these partnerships, Athesi enables to support global and major projects.



Always attentive to the requirements of its customers and with its experience, Athesi listens to market requests and trends to design new products.

Leader in the field of professional mobility, Athesi's main mission is to offer a full range of equipment and associated services in order to increase the efficiency and productivity of its customers. Athesi offers high-technology products to manage all types of business applications in mobility, traceability and data collection areas.

Athesi supports its customers in their digital migration helping them with customizable devices that all professional users needs.

From the beginning, Athesi has been an independent company with equity capital. The financial statements, which are published every year, have been positive from the beginning. Major part of profits is reinvested every year for Research and development.

The European Services Center is in France.



Athesi, the coherence of the product range

Athesi offers a very complete product range aligned to with the needs of small, large, national and international companies. Athesi wants each of them, whatever is their line of business, to find the best product for their technology and financial requirements.

Because the needs are different and each customer is unique, Athesi designs a wide products portfolio with differences such as: ruggedness, service contracts, prices etc.

The product range is organized as follows :



Athesi E Series :

- Rugged, lightweight and thin products
- Bundle configurations
- Large availability from stock
- The most attractive prices
- Product availability minimum 3 years
- 3 years service contracts

Athesi R Series :

- Products with an industrial design
- High-performance products
- High flexibility in configuration and options
- A very large choice of professional accessories
- Customizable hardware and software for projects
- Product availability minimum 5 years
- 3 to 5 years service contracts





Support department

Athesi provides free dedicated support department to help you to make the best use of its products. The Hotline answers all questions and, as far as possible, helps to avoid a product return by providing the necessary support on line. This support is available for pre-sales and post-sales requests.



Customization department

Depending the size of the projects, the «customization» department analyses the possible modifications and adaptations of the hardware and also of their OS and firmwares. This department is also offering tailor-made solutions for specific factory processes (installation of masters, custom packaging, labelling, etc.) to optimise the supply chain and save time and money.

Repair department

Athesi European Services Center for repairs is in France. Athesi is highly committed to have its own maintenance workshops in order to ensure a high level of service and a well-managed lead time. Service Center is composed by a team of engineers and specialized technicians, to be able to do any kind of repair. The after-sales staff is constantly in link with R&D, which allows a permanent qualitative evolution of the products. Athesi offers a range of standard or tailor-made service contracts to satisfy all the requirements depending on the sector.



Logistic department

Athesi has large quantity of products available in stock in order to ensure short delivery time. Same for big quantity of spare parts enables us to offer an optimal quality of service and to respect the deadlines for maintenance services. As soon as device is dispatched, a tracking number is used to track deliveries in real time.

Rugged Smartphones and PDA - E Series



SPA43B 2 GB RAM, 16 GB FlashROM. Multi-touch touchscreen display. Micro SD. SIM. Charging connector on base. Rear camera 5 Mpx autofocus and flash. USB 2.0 communication and charging client. 140x78x28 mm. Operating from -5°C to +50°C.

Shipped with : 3150 mA battery, handstrap, screen protection, USB power adapter.

Processor	OS	Display	Barcode Reader	RFID Reader	Communication	IP rating / Drops	Weight
Cortex 1,3 Ghz Quad Core	Android 7 GMS	WVGA 480 x 800 400 Nits	1D/2D imager	HF 13,56MHz (NFC)	4G LTE, Wifi a/b/g/n, Bluetooth 4.0, GPS	IP66 / 1,2m MIL STD 810G	250g

The less expensive, removable battery and multi-use.



Desktop dock
AT-CASPA4303



Battery 3150 mA
3,7 V
AT-CASPA4301



Arm holster
AT-CASPA4304



Hand strap
AT-CASPA4306



Cigar lighter charger
AT-CASPA4308



Power adapter USB
AT-CASPA4302



E5L 2 GB RAM, 16 GB FlashROM. Rear camera 13 Mpx autofocus and flash and front camera 8 Mpx. Capacitive multi-touch display. Gorilla Glass 4. Micro SD. SIM. Micro USB and docking connector. Accelerometer. Brightness sensor. 156x74x17 mm. Operating from -10°C to +50°C.

Shipped with : 4000 mA battery, wrist strap, USB power adapter.

Processor	OS	Display	Barcode Reader	RFID Reader	Communication	IP rating / Drops	Weight
MT8735A Quad Core ARM® Cortex-A53 MPCore 1.44 GHz	Android 8.1 GMS	HD 720 x 1280 300 Nits	1D/2D imager	HF 13,56MHz (NFC)	4G LTE, Wifi a/b/g/n, Bluetooth 4.0, GPS	IP65 / 1,2m MIL STD 810G	260g

Removable battery, light and thin, physical function keys.



USB / Ethernet desktop dock
AT-CAE5L01



Battery
AT-CAE5L02



Holster belt clip
CARP10010



Wrist strap
AT-CAE5L05



Cigar lighter charger
AT-CASPA4308



Power adapter USB
AT-CAE5L04

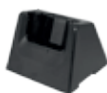


E5 2 GB RAM, 16 GB FlashROM, 4600 mA battery. Rear camera 13 Mpx autofocus and flash. Capacitive multi-touch display. Gorilla Glass 4. Micro SD. Dual SIM. Micro USB and docking connector. Accelerometer. Brightness sensor. 155x78x18 mm. Operating from -20°C to +55°C.

Shipped with : hand strap, screen protection, wrist strap, USB power adapter.

Processor	OS	Display	Barcode reader	RFID reader	Communication	IP rating / Drop	Weight
MT6737 Quad Core 1,3 Ghz	Android 7 GMS	HD 720 x 1280 400 Nits	1D/2D imager	HF 13,56MHz (NFC)	4G LTE, Wifi a/b/g/n, Bluetooth 4.0, GPS	IP68 / 1,7m MIL STD 810G	245g

Classic smartphone design but very rugged.



Ethernet desktop dock
AT-CAE5b01



Holster belt clip
CARP10010



Arm holster
AT-CAE505



Hand strap
AT-CAE507



Wrist strap
AT-CAE504



Cigar lighter charger
AT-CASPA4308



Power adapter USB
AT-CAE503

Rugged Smartphones and PDA - E Series



E50 4 GB RAM, 32 GB FlashROM. 4650 mA battery. Rear camera 13 Mpx autofocus and flash and front camera 8 Mpx. Capacitive multi-touch display. Gorilla Glass 5, micro SD, dual SIM/SAM. USB C and docking connector. 156x78,5x19,4 mm. Accelerometer. Brightness sensor. Operating from -20°C to +55°C.

Shipped with : hand strap, screen protection, USB power adapter.

Processor	OS	Display	Barcode reader	RFID reader	Communication	IP rating / Drop	Weight
Qualcomm MSM8953 ARM Cortex Octo Core 2,0 GHz	Android 7.1 GMS	HD 720 x 1280 400 Nits	1D/2D imager	HF 13,56MHz (NFC)	4G LTE, Wifi a/b/g/n, Bluetooth 4.2, GPS	IP68 / 2m MIL STD 810G	250g

Classic smartphone design but very rugged, Qualcomm processor, USB C.



Ethernet Desktop dock
AT-CAE50A01

Holster belt clip
CARP10010

Arm holster
AT-CAE5005

Hand strap
AT-CAE50A05

Wrist strap
AT-CAE504

Cigar lighter charger
AT-CASPA4308

Power adapter USB
AT-CAE50A04

4 slots Desktop cradle
AT-CAE50A03



E6A 2 GB RAM, 16 GB FlashROM. Rear camera 8 Mpx autofocus and flash and front camera 2 Mpx. Capacitive multi-touch display. Gorilla Glass 3. Micro SD, micro SIM, USB 2.0 client. Accelerometer, brightness sensor. Micro USB and docking connector. 185x94x26 mm. Operating from -10°C to 50°C.

Shipped with : 5000 mA/3,7V battery pack, hand strap, micro USB cable, USB power adapter.

Processor	OS	Display	Barcode reader	RFID reader	Communication	IP rating / Drop	Weight
Mediatek MT8735B Quad Core 1.3 GHz	Android 8.1 GMS	720x1280 430 Nits	1D/2D imager	HF 13,56MHz (NFC)	4G LTE, Wifi a/b/g/n, Bluetooth 4.0, GPS	IP65 / 1,2m MIL STD 810G	360g

Widescreen display, removable battery, very rugged, communication base.



Ethernet desktop dock
AT-CAE603B

2 slots desktop charger
AT-CAE603

Battery 5000mA
3,7V
AT-CAE601

Holster belt clip
AT-CAE606

Hand strap
AT-CAE604

Cigar lighter charger
AT-CASM1016

Power adapter USB
AT-CAE602



ADAPTED TO ORDER TAKING

6" and 7" Rugged Tablets - E Series



E6C 4 GB RAM, 64 GB FlashROM, USB 2.0 client, micro SD, micro SIM. Rear camera 8 Mpx autofocus and front camera 2 Mpx. Accelerometer, brightness sensor. Gorilla Glass 3. 720x1280 pixels capacitive and multi-touch display. Micro USB and docking connector. 185x94x26mm. Operating from -10°C to 50°C.

Shipped with : 5000 mA/3,7V battery pack, hand strap, USB power adapter.

Processor	OS	Display	Barcode reader	RFID reader	Communication	IP rating / Drop	Weight
Intel Atom Cherrytrail-T Z8350 Quad Core 1,92Ghz	Windows 10	720x1280 430 Nits	1D/2D imager	HF 13,56MHz (NFC)	3G, Wifi a/b/g/n, Bluetooth 4.0, GPS	IP65 / 1,2m MIL STD 810G	360g

Windows 10 x86 in 6-inch tablet, removable battery, very rugged.



Ethernet desktop dock
AT-CAE603B



2 slots desktop charger
AT-CAE603



Battery 5000mA 3,7V
AT-CAE601



Holster belt clip
AT-CAE606



Hand strap
AT-CAE604



Cigar lighter charger
AT-CASPA4308



Power adapter USB
AT-CAE602



Athesi E6C Tablet

A real Windows 10 in a 6" tablet



E7B Windows. 4 GB RAM, 64 GB FlashROM. 7500 mA 3,7V battery. USB 2.0 client, micro USB, HDMI, micro SD, SIM. Rear camera 5 Mpx and front camera 2 Mpx. Accelerometer, brightness sensor. Optional fingerprint reader, optional RFID UHF. 217x134x21,4 mm. Operating from -10°C to 50°C.

Shipped with : hand strap, micro USB cable, USB power adapter.



E7T Android. 2 GB RAM, 32 GB EMMC. 7500 mA 3,7V battery. USB 2.0 client, micro USB, HDMI, micro SD, SIM. Rear camera 13 Mpx and front camera 2 Mpx. Accelerometer, brightness sensor. Optional fingerprint reader, optional RFID UHF. 217x134x21,4 mm. Operating from -10°C to 50°C.

Shipped with : hand strap, micro USB cable, USB power adapter.

Product	Processor	OS	Display	Barcode reader	RFID reader	Communication	IP rating / Drop	Weight
E7B Tablet	Intel Atom Cherrytrail-T Z8350 Quad Core 1,92Ghz	Windows 10	1280x800 Dual Mode 1000 Nits	1D /2D imager	N/A	4GLTE, Wifi a/b/g/n/ac, Bluetooth 4.0 (BLE), GPS	IP67 / 1,2m MIL STD 810G	640g
E7T Tablet	MT8735A Quad Core ARM® Cortex-A53 MPCore™	Android 8.1	1280x800 1000 Nits	1D /2D imager	HF 13,56MHz (NFC) Front face	4GLTE, Wifi a/b/g/n/ac, Bluetooth 4.0, (BLE) GPS	IP67 / 1,2m MIL STD 810G	640g

Function keys, fingerprint reader, RFID UHF, RFID HF NFC in front side (E7T), very high sunlight readability display.



Ethernet desktop dock
AT-CAE8B01



Hand strap
AT-CAE7B03



Cigar lighter charger
AT-CAE803



Power adapter 5V
AT-CAE805



Active stylus
AT-CAE802



Stylus attachment
AT-CAE806



Harness carrying case
AT-CAE702

8" Rugged Tablets - E Series



E8CL Windows. 4 GB RAM, 64 GB EMMC. Brightness Sensor. Rear camera 5 Mpx autofocus and front camera 2 Mpx. Accelerometer. Micro USB 3.0, audio jack, mini HDMI, micro SD. 7500 mA 3,7V internal Battery. 220x143x14mm. Operating from -10°C to 50°C.

Shipped with : hand strap, micro USB cable, power supply.



E8TL Android. 2 GB RAM, 32 GB EMMC. Brightness Sensor. Rear camera 8 Mpx autofocus and front camera 5 Mpx. Accelerometer, micro USB 2.0, audio jack, mini HDMI, micro SD. 7500 mA 3,7V internal Battery. 220x143x14mm. Operating from -10°C to 50°C.

Shipped with : hand strap, micro USB cable, power supply.

Product	Processor	OS	Display	Barcode reader	RFID reader	Communication	IP rating / Drop	Weight
E8 CL Tablet	Intel Atom Cherrytrail-T Z8350 Quad Core 1,92Ghz	Windows 10	1280 x 800 Dual mode 320 Nits	N/A	HF 13,56MHz (NFC)	4GLTE, Wifi a/b/g/n/ac, Bluetooth 4.2, GPS	IP67 / 1,2m MIL STD 810G	630g
E8 TL Tablet	Mediatek MT8783 Octo Core 1,3 Ghz	Android 7 GMS	1280 x 800 Dual mode 400 Nits	N/A	HF 13,56MHz (NFC)	4G LTE, Wifi a/b/g/n/ac, Bluetooth 4.0, GPS	IP67 / 1,2m MIL STD 810G	630g

Very thin case, cheaper.



Harness carrying case
AT-CAE8L05



Hand strap
AT-CAE808



Cigar lighter charger
AT-CAE803



Power adapter 5V
AT-CAE805



Active stylus
AT-CAE802



Stylus attachment
AT-CAE806



E8B Windows. 4 GB RAM, 128 GB EMMC. Brightness Sensor. Rear camera 5 Mpx autofocus and front camera 2 Mpx. Accelerometer. 2x USB 2.0, audio jack, mini HDMI, micro SD. 8300 mA 3,7V internal battery. 228x145x16.5mm. Operating from -10°C to 50°C.

Shipped with : hand strap, micro USB cable, power supply.



E8T Android. 2 GB RAM, 64 GB EMMC. Brightness Sensor. Rear camera 13 Mpx autofocus and front camera 2 Mpx. Accelerometer. Micro USB 2.0, standard USB, audio jack, mini HDMI, micro SD. 8500 mA 3,7V internal battery. 228x145x16.5mm. Operating from -10°C to 50°C.

Shipped with : hand strap, micro USB cable, power supply.

Product	Processor	OS	Display	Barcode reader	RFID reader	Communication	IP rating / Drop	Weight
E8B Tablet	Intel Atom Cherrytrail-T Z8350 Quad Core 1,92Ghz	Windows 10	1280 x 800 Dual mode 400 Nits	1D /2D imager	HF 13,56MHz (NFC)	4GLTE, Wifi a/b/g/n/ac, Bluetooth 4.0, GPS	IIP67 / 1,2m MIL STD 810G	710g
E8T Tablet	Mediatek MT8738 Quad Core ARM Cortex A5	Android 8.1 GMS	1280 x 800 Dual mode 400 Nits	1D /2D imager	HF 13,56MHz (NFC)	4GLTE, wifi a/b/g/n/ac, Bluetooth 4.0, GPS	IP67 / 1,2m MIL STD 810G	710g

Rugged tablet, various accessories, various setup.



Ethernet desktop dock
AT-CAE8B01



Vehicle Dock
AT-CAE8011B



Harness carrying case
AT-CAE8010



Hand strap
AT-CAE808



Cigar lighter charger
AT-CAE803



Power adapter 5V
AT-CAE805



Active stylus
AT-CAE802



Stylus attachment
E8/E10/E12
AT-CAE806



DC/DC converter
AT-CAE1005

10" and 12" Rugged Tablets - E Series



E10CL Windows. 4 GB RAM, 32 GB EMMC. Brightness sensor. Rear camera 5 Mpx autofocus and front camera 2 Mpx. Accelerometer. Micro USB 3.0, audio jack, mini HDMI, micro SD. 10 000 mA internal battery, 3,7V. 268x178x14mm. Operating from -10°C to 50°C.

Shipped with : hand strap, micro USB cable, power supply.



E10TL Android. 2 GB RAM, 16 GB EMMC. Brightness sensor. Rear camera 8 Mpx autofocus and front camera 2 Mpx. Accelerometer, micro USB 2.0, audio jack, mini HDMI, micro SD. 10 000 mA internal battery, 3,7V. 268x178x14mm. Operating from -10°C to 50°C.

Shipped with : hand strap, micro USB cable, power supply.

Product	Processor	OS	Display	Lecteur code barres	RFID reader	Communication	IP rating / Drop	Weight
Tablette E10 CL	Intel Atom Cherrytrail-T Z8350 Quad Core 1,92Ghz	Windows 10	1280 x 800 Dual mode 400 Nits	N/A	N/A	3G, Wifi a/b/g/n/ac, Bluetooth 4.0, GPS	IP65 / 1,2m MIL STD 810G	920g
Tablette E10 TL	Mediatek MT8783 Octo Core 1,3Ghz	Android 7 GMS	1280 x 800 Dual mode 400 Nits	N/A	HF 13,56MHz (NFC)	4G LTE, Wifi a/b/g/n/ac, Bluetooth 4.0, GPS	IP65 / 1,2m MIL STD 810G	920g

Very thin case, cheaper.



Harness carrying case
AT-CAE10L01



Hand strap
AT-CAE10L03



Power adapter
AT-CAE805



Cigar lighter charger
AT-CAE803



Active stylus
AT-CAE802



Stylus attachment
AT-CAE806



E10B Windows. 4 GB RAM, 128 GB EMMC. Brightness sensor. Rear camera 5 Mpx autofocus and front camera 2 Mpx. Accelerometer. 2x USB 2.0, audio jack, mini HDMI, micro SD, SIM. RS232, RJ45. 10000 mA 3,7V internal removable battery. 280x187x22mm. Operating from -10°C to 50°C.

Shipped with : hand strap, micro USB cable, power supply.



E10BK Windows. 8 GB RAM, 128 GB SSD. Brightness sensor. Rear camera 8 Mpx autofocus and front camera 2 Mpx. Accelerometer. USB 3.0, USB 2.0, audio jack, mini HDMI, micro SD, SIM. RS232, RJ45. 280x187x22mm. Operating from -10°C to 50°C.

Shipped with : 5000 mA 7,4V battery pack, hand strap, micro USB cable, power supply.



E10BC Windows. 8 GB RAM, 128 GB SSD. Brightness sensor. Rear camera 8 Mpx autofocus and front camera 2 Mpx. Accelerometer. USB 3.0, USB 2.0, audio jack, mini HDMI, micro SD, SIM. RS232, RJ45. 280x187x22mm. Operating from -10°C to 50°C.

Shipped with : 5000 mA 7,4V battery pack, hand strap, micro USB cable, power supply.



E10T Android. 2 GB RAM, 32 GB EMMC. Brightness Sensor. Rear camera 13 Mpx autofocus and front camera 2 Mpx. Accelerometer. 2x USB 2.0, audio jack, mini HDMI, micro SD, SIM. RS232, RJ45. 280x187x22mm. Operating from -10°C to 50°C.

Shipped with : 10000 mA 3,7V battery pack, hand strap, micro USB cable, power supply.

Product	Processor	OS	Display	Barcode reader	RFID reader	Communication	IP rating / Drops	Weight
E10B Tablet	Intel Atom Cherrytrail-T Z8350 Quad Core 1,92 Ghz	Windows 10	1280 x 800 Dual mode 400 Nits	1D/2D Imager	HF 13,56MHz (NFC)	4GLTE, Wifi a/b/g/n/ac, Bluetooth 4.1, GPS	IP65 / 1,2m MIL STD 810G	1210g
E10BK Tablet	Intel Core Kabylake m3 7Y30 2,6 Ghz	Windows 10	1920 x 1200 Dual mode 400 Nits	1D/2D Imager	N/A	4GLTE, Wifi a/b/g/n/ac, Bluetooth 4.2, GPS	IP65 / 1,2m MIL STD 810G	1210g
E10BC Tablet	Core I5 Amberlake I5 8200Y 3,9 Ghz	Windows 10	1920 x 1200 Dual mode 400 Nits	1D/2D Imager	N/A	4GLTE, Wifi a/b/g/n/ac, Bluetooth 4.2, GPS	IP65 / 1,2m MIL STD 810G	1210g
E10T Tablet	Mediatek MT8738 Quad Core ARM Cortex A5	Android 8.1 GMS	1280 x 800 Dual mode 400 Nits	1D /2D imager	HF 13,56MHz (NFC)	4GLTE, Wifi a/b/g/n/ac, Bluetooth 4.0, GPS	IP65 / 1,2m MIL STD 810G	1210g

Rugged, ethernet port, RS232 port, communication and charging base. Possibility to have high-performance versions (Kabylake, iCore 5).

10" and 12" Rugged Tablets - E Series



E10/E12 Desktop dock
AT-CAE1201
AT-CAE1201K



E10B Vehicle dock with key lock, Ethernet, DC jack, 2 USB, RS232 DB9, kit fixation
AT-CAE1011B
AT-CAE1011B1



Additional removable battery
AT-CAE1008
AT-CAE1008K



Harness carrying case
AT-CAE1013



Hand strap
AT-CAE1006



Cigar lighter charger
AT-CAE803



Power adapter
AT-CAE805



DC/DC converter
AT-CAE1005



Active stylus
AT-CAE802



Stylus attachment
AT-CAE806



VESA plate
AT-CART8016



E12B Windows. 4 GB RAM, 128 GB SSD. Brightness sensor. Rear camera 5 Mpx autofocus and front camera 2 Mpx. Accelerometer. 2x USB 2.0, USB 3.0, micro USB, audio jack, mini HDMI, micro SD, SIM. RS232, RJ45. 319x216x23.4mm. Operating from -10°C to 50°C.
Shipped with : 12600 mA 3,7V battery pack, hand strap, micro USB cable, power supply.



E12K Windows. 4 GB RAM, 128 GB EMMC ROM. Brightness sensor. Rear camera 8 Mpx autofocus and front camera 2 Mpx. Accelerometer. 2x USB 2.0, USB 3.0, micro USB, audio jack, mini HDMI, micro SD, SIM. RS232, RJ45. 319x216x23.4mm. Operating from -10°C to 50°C.
Shipped with : 5000 mA 7,4V battery pack, hand strap, micro USB cable, power supply.

Product	Processor	OS	Display	Barcode reader	RFID reader	Communication	IP rating / Drop	Weight
E12B Tablet	Intel Atom Cherrytrail-T Z8300 Quad Core 1,8 Ghz	Windows 10	1920 x 1200 Dual mode 300 Nits	1D/2D imager	HF 13,56MHz (NFC)	4GLTE, wifi a/b/g/n/ac, Bluetooth 4.1, GPS	IP65 / 1,2m MIL STD 810G	1480 g
E12K Tablet	Intel Core Kabylake m3 7Y30 2,6 Ghz	Windows 10	1920 x 1200 Dual mode 300 Nits	1D/2D imager	HF 13,56MHz (NFC)	4GLTE, wifi a/b/g/n/ac, Bluetooth 4.2, GPS	IP65 / 1,2m MIL STD 810G	1480 g

Widescreen display, various accessories, RS232 and Ethernet port, high performance version (with Kabylake processor).



E10/E12 Ethernet desktop dock
AT-CAE1201
AT-CAE1201K



Additional removable battery
AT-CAE1205
AT-CAE1205K



Cigar lighter charger
AT-CAE803



Hand strap
AT-CAE1206



Harness strap
AT-CAE1207B



Shoulder strap
AT-CAE1207



Power adapter
AT-CAE805
AT-CAE1202



Removable QWERTY keyboard
AT-CAE1210



DC/DC converter
AT-CAE1005



Stylus attachment
AT-CAE806



Active stylus
AT-CAE802

The industrial range,
Athesi E Series

Athesi
Mobile Generation



5.5" Smartphones and 8" Rugged Tablets - R Series



RT55 4 GB RAM, 64 GB FlashROM, 5100 mA Lithium ION polymer battery. Rear camera 13 Mpx autofocus and flash and front camera 8 Mpx. Capacitive multi-touch display. Gorilla Glass, micro SD, dual SIM, USB Type-C client. Accelerometer. Brightness sensor. 175x83x20.5mm. Operating from -20°C to 50°C.

Shipped with : 5100 mA 3,7V battery, hand strap, USB cable, power supply.

Processor	OS	Display	Barcode reader	RFID reader	Communication	IP rating / Drop	Weight
MT6750T Cortex A53 Octo Core 1,5 Ghz	Android 7 GMS	Full HD 1080 x 1920 400 Nits	1D/2D imager	HF 13,56MHz (NFC)	4G LTE, Wifi a/b/g/n/ac, Bluetooth 4.1, AGPS	IP67 / 1,5m MIL STD 810G	335g

Removable battery, very rugged, integrated hand strap, Full HD display, USB Type-C.



Desktop dock
AT-CART5501

4 slots batteries
charger
AT-CART5505

Battery
AT-CART5502

Hand strap
AT-CART5503

Power adapter
AT-CART5507

Bumper
AT-CART5506



RT80 Windows. 4 GB RAM, 128 GB SSD MLC. Rear camera 8 Mpx autofocus and front camera 2 Mpx. G-sensor. Brightness sensor. NFC. USB 2.0, USB 3.0, audio jack, micro HDMI, micro SD, SIM. 160 mA 3,7V internal battery. 232.6x150x22mm. Operating from -10°C to 50°C.

Shipped with : 11850 mA 3,8V hot-swappable battery pack, hand strap, carrying handle, stylus and stylus attachment, screen protection, power supply.



RT80A Android. 4 GB RAM, 64 GB SSD MLC. Rear camera 8 Mpx autofocus and front camera 2 Mpx. G-sensor. Brightness sensor. NFC. USB 2.0, USB 3.0, audio jack, micro HDMI, micro SD, SIM. 160 mA 3,7V internal battery. 232.6x150x22mm. Operating from -10°C to 50°C.

Shipped with : 11850 mA 3,8V hot-swappable battery pack, hand strap, carrying handle, stylus and stylus attachment, screen protection, power supply.

Product	Processor	OS	Display	Barcode reader	RFID reader	Communication	IP rating / Drop	Weight
RT80 Tablet	Intel Atom Cherrytrail-T Z8550 2,4Ghz Quad Core	Windows 10	1280 x 800 370 Nits	1D/2D Imager	HF 13,56MHz (NFC)	4GLTE, Wifi a/b/g/n/ac, Bluetooth 4.1, GPS	IP65 / 1,5m MIL STD 810G	910g
RT80A Tablet	Rockchip RK3399 2Ghz Hexa Core	Android 7.1	1280 x 800 470 Nits	1D/2D imager	HF 13,56MHz (NFC)	4GLTE, Wifi a/b/g/n/ac, Bluetooth 4.2, GPS	IP65 / 1,5m MIL STD 810G	910g

Android or Windows platform, hot-swappable battery, industrial accessories, extended connectivity, very rugged.



Desktop dock
AT-CART8001B

Vehicle dock
AT-CART8002
AT-CART8002B

Battery 11850 mA
AT-CART8004

4 slots batteries charger
AT-CART8010

Harness carrying case
AT-CART8017

Carrying handle
AT-CART8007

Hand strap
AT-CART8006

Shoulder strap
AT-CAE1207

Cigar lighter charger
AT-CART8012

Capacitive stylus
AT-CART8009

SNAP-ON
AT-CART8005

VESA plate
AT-CART8016



French manufacturer of
rugged tablets and
smartphones

Athesi
Mobile Generation

10" and 12" Rugged Tablets - R Series



RT101 Windows. 4 GB RAM, 128 GB SSD MLC. Rear camera 8 Mpx autofocus and front camera 2 Mpx. G-sensor. Brightness sensor. NFC. USB 2.0, USB 3.0, audio jack, micro HDMI, micro SD, SIM. 160 mA 3,7V internal battery. 283.4x192x29.1mm. Operating from -10°C to 50°C.

Shipped with : 10800 mA 3,8V hot-swappable battery pack, hand strap, carrying handle, stylus and stylus attachment, screen protection, power supply.



RT101A Android. 4 GB RAM, 64 GB SSD MLC. Rear camera 8 Mpx autofocus and front camera 2 Mpx. G-sensor. Brightness sensor. NFC. USB 2.0, USB 3.0, audio jack, micro HDMI, micro SD, SIM. 160 mA 3,7V internal battery. 283.4x192x29.1mm. Operating from -10°C to 50°C.

Shipped with : 10800 mA 3,8V hot-swappable battery pack, hand strap, carrying handle, stylus and stylus attachment, screen protection, power supply.

Product	Processor	OS	Display	Barcode reader	RFID reader	Communication	IP rating / Drop	Weight
RT101 Tablet	Intel Atom Cherrytrail-T Z8550 2,4Ghz Quad Core	Windows 10	1920 x 1200 470 Nits	1D/2D Imager	HF 13,56MHz (NFC)	4GLTE, Wifi a/b/g/n/ac, Bluetooth 4.0, GPS	IP65 / 1,5m MIL STD 810G	1275g
RT101A Tablet	Rockchip RK3399 2Ghz Hexa Core	Android 9.1 GMS	1920 x 1200 470 Nits	1D/2D imager	HF 13,56MHz (NFC)	4GLTE, Wifi a/b/g/n/ac, Bluetooth 4.2, GPS	IP65 / 1,5m MIL STD 810G	1275g

Android or Windows platform, 3D Camera, hot-swappable battery, industrial accessories, extended connectivity, very rugged.



Desktop dock
AT-CART80B



Vehicle dock
AT-CART10101
AT-CART101B01



Battery 10800 mA
AT-CART10102



4 slots batteries charger
AT-CART8010



Harness carrying case
AT-CART10105



Carrying handle
AT-CART8007



Hand strap
AT-CART10103



Shoulder strap
AT-CAE1207



Cigar lighter charger
AT-CART8012



Capacitive stylus
AT-CART8009



SNAP-ON
AT-CART8005



VESA plate
AT-CART8016



RT122 8 GB RAM, 128 GB SSD MLC. Rear camera 8 Mpx autofocus and front camera 2 Mpx. G-sensor. Brightness sensor. USB 3.0, RJ45 Ethernet, audio jack, micro HDMI, micro SD, micro SIM. 147 mA 7,4V internal battery. 317.5x214x27.3mm. Operating from -10°C to 50°C.

Shipped with : 6200 mA 7,6V hot-swappable battery pack, hand strap, carrying handle, stylus and stylus attachment, screen protection, power supply.

Product	Processor	OS	Display	Barcode reader	RFID reader	Communication	IP rating / Drop	Weight
RT122 Tablet	Intel Core i5 7200U 3,1 Ghz	Windows 10	1920 x 1200 Dual mode 800 Nits	1D/2D imager	HF 13,56MHz (NFC)	4GLTE, Wifi a/b/g/n/ac, Bluetooth 4.2, GPS	IP65 / 1,2m MIL STD 810G	1955g

Hot-swappable battery, 3D Camera, industrial accessories, extended connectivity, very rugged, high performance version with ICore 5 processor.



Desktop dock
AT-CART12201



Vehicle dock
AT-CART12202



Battery 6200 mA pour
RT122
AT-CART12204



4 slots batteries charger
AT-CART12210



Harness carrying case
AT-CART12205



Carrying handle
AT-CART12206



Hand strap
AT-CART12205



Cigar lighter charger
AT-CART8012



Capacitive stylus
AT-CART8009



Active stylus RT122
AT-CART12207



SNAP-ON
AT-CART8005



VESA plate
AT-CART8016



Shoulder strap
AT-CAE1207



RP1500 Octo Core CPU Samsung Exynos 1,8 GHz, 3 GB RAM and 16 GB Flash. Rear camera 13 Mpx flash and autofocus. 139x73x21mm. Operating from -20°C to +60°C.

Shipped with : 1860 mA battery pack, 1 desktop cradle with power supply and an USB cable , 2 stylus with a stylus attachment and a screen protection.

RP1600X Hexa Core CPU Rockchip 1,8 GHz, 4 GB RAM and 32 GB Flash. Rear camera 13 Mpx flash and autofocus. 147x78x21mm. Operating from -20°C to +60°C.

Shipped with : 2860 mA battery pack, 1 desktop cradle with power supply and an USB cable , 2 stylus with a stylus attachment and a screen protection.

Product / Reference	OS	Display	Keyboard	Barcode reader	RFID reader	Communication	IP rating / Drop	Weight
RP1500	Android 6.0 GMS	3,5" VGA 450 Nits	24 keys	1D Laser 1D/2D Imager	HF 13,56MHz (NFC)	4G LTE, Wifi a/b/g/n, bluetooth 4.0 LE, GPS	IP64 / 1,5m	250g
RP1600X	Android 8.1 GMS	4,3" WVGA 500 Nits	5 front and 5 side keys	Laser (SR/LR), Imager (SR/LR)	HF 13,56MHz (NFC)	4G LTE, Wifi a/b/g/n/ac, bluetooth 4.2 LE, A-GPS	IP64 / 1,5m	320g

Very compact, large number of accessories, smartcard reader, long life removable battery.



Desktop dock
CARP10003



Ethernet desktop dock
CARP10004



Desktop dock
CARP10003B



Ethernet desktop dock
CARP10004B



Gun
CARP10030



Vehicle dock
CARP10009C



Multigender with Jack, USB and Ethernet connector
CARP10017



High capacity battery 4A
CARP10002



RP70 4 Windows. 4 GB RAM, 64 GB SSD. Rear camera 8 Mpx autofocus and flash and front camera 2 Mpx. G-sensor. Brightness sensor. USB 3.0, audio jack, micro SD, micro SIM. 200mA internal battery. 131x203x19mm. Operating from -20°C to 60°C.

Shipped with : 5600mA 3,7V hot-swappable battery pack, hand strap, USB cable, power supply.



RP70A Android. 4 GB RAM, 32 GB SSD. Rear camera 13 Mpx autofocus and flash and front camera 2 Mpx. G-sensor. Brightness sensor. USB 3.0, audio jack, micro SD, micro SIM. 200mA internal battery. 131x203x19mm. Operating from -20°C to 60°C.

Shipped with : 5600mA 3,7V hot-swappable battery pack, hand strap, USB cable, power supply.

Product	Processor	OS	Display	Barcode reader	RFID reader	Communication	IP rating / Drop	Weight
RP70 Tablet	Intel Atom Cherrytrail-T Z8350 Quad Core 1,92Ghz	Windows 10	1280 x 800 Dual mode 700nits	1D/2D Imager	HF 13,56MHz (NFC)	4GLTE, Wifi a/b/g/n/ac, Bluetooth 4.2, GPS	IP64 / 1,2m MIL STD 810G	600g
RP70A Tablet	Rockchip CPU Hexa Core 1,8 Ghz	Android 8.1	1280 x 800 Dual mode 700 Nits	1D/2D Imager	HF 13,56MHz (NFC)	4GLTE, Wifi a/b/g/n/ac, Bluetooth 4.2, GPS	IP64 / 1,2m MIL STD 810G	600g

Compact with many accessories and a very bright display for outdoor use.



Desktop dock
AT-CARP7001



Vehicle dock
AT-CARP7002



10200 mA Battery
AT-CARP7007



Protective case



Power adapter
AT-CARP7004



Stylus
AT-CARP7009



EID10 Hexa Core CPU Rockchip 1,8 GHz, 4 GB RAM and 32 GB Flash. Rear camera 13 Mpx flash and autofocus. 147x78x21mm. Operating from -20°C to +60°C.

Shipped with : 2860 mA battery pack, 1 desktop cradle with power supply and an USB cable , 2 stylus with a stylus attachment and a screen protection.

Product / Reference	OS	Display	Keys	Scanners	Communication	IP rating / Drop	Weight
RP1600X EID 10	Android 8.1 GMS	4,3" WVGA 500 Nits	5 front and 5 side keys	1D/2D reader, 13.56 Mhz NFC RFID reader, fingerprint, OCR, MRZ, smart card reader, MSR, facial recognition	4G LTE, Wifi a/b/g/n/ac, bluetooth 4.2 LE, A-GPS	IP64 / 1,5m	495g

Very compact, all-in-one product with OCR/MRZ reader, MSR reader, fingerprint reader, smart card reader, facial recognition, NFC, 1D/2D reader.



RP70A BIO Android. 4 GB RAM, 32 GB SSD. Rear camera 13 Mpx autofocus and flash and front camera 2 Mpx. G-sensor. Brightness sensor. USB 3.0, audio jack, micro SD, micro SIM. 200mA internal battery. 213mm(H)x195.3mm(W)x30.55mm/20.95mm(D). Operating from -20°C to 60°C.

Shipped with : 5600mA 3,7V hot-swappable battery pack, hand strap, USB cable, power supply.

Product	Processor	OS	Display	Scanners	Communication	IP rating / Drop	Weight
RP70A BIO Tablet	Rockchip CPU Hexa Core 1,8 Ghz	Android 8.1	1280 x 800 Dual mode 700 Nits	1D/2D reader, NFC reader, fingerprint, OCR, MRZ, MSR, smart card reader, facial and iris recognition	4GLTE, Wifi a/b/g/n/ac, Bluetooth 4.2, GPS	IP64 / 1,2m MIL STD 810G	850g

Very compact, all-in-one product with OCR/MRZ reader, MSR reader, fingerprint reader, smart card reader, facial and iris recognition, NFC, 1D/2D reader.



DSIC - Mobilebase



DS4 Windows. 512 Ko RAM, 4 GB FlashROM. SD slot. Micro USB 2.0. 4A battery, 70mA internal battery. Rear camera 5MP. 76X164X26.5mm. Operating from -20°C to +60°C.

DS4A Android. 2 GB RAM, 16 GB FlashROM. SD slot. Micro USB 2.0, 4A battery, 70mA internal battery. Rear camera 13MP. 77x159x26.5mm. Operating from -20°C to +60°C.

Shipped with : 4000 mA 3,7V battery pack, hand strap, cradle, screen protection, USB cable, power supply.



3,7V 4000 mA
Li-ION battery for DS4
AT-CADS401

Hand strap
AT-CADS404



Desktop Dock
USB Client and Host
DB9 RS232 connectors.
AT-CADS402



Gun
AT-CADS405

Product	Processor	OS	Display	Keyboard	Barcode reader	RFID reader	Communication	IP rating / Drop	Weight
DS4	ARM Cortex 1GHz	Windows CE	3,5" QVGA resistive	32 keys	1D Laser 1D/2D Imager	N/A	Wifi a/b/g/n, bluetooth 2.1	IP65 / 1,8m	320g
DS4	ARM Cortex 1GHz	Windows Mobile 6.5	3,5" VGA resistive	32 keys	1D Laser 1D/2D Imager	N/A	4GLTE, Wifi a/b/g/n, Bluetooth 2.1, GPS	IP65 / 1,8m	320g
DS4A	ARM Cortex A53 2GHz 8 Core 64 bits	Android 7.1 GMS	4" WVGA capacitive	32 keys	1D Laser 1D/2D Imager	N/A	4GLTE, Wifi a/b/g/n/ac, Bluetooth 4.2, GPS	IP65 / 1,8m	340g

Keyboard, several OS choices, extremely rugged, high performance, several setup, removable battery.



DS5 512 Ko RAM, 1 GB FlashROM. Resistive display. Micro SD, micro USB. 120 mA internal battery. 212x78mm. Operating from -20°C to +60°C.

DS5AX 2 GB RAM, 8 GB Flash-ROM. Resistive display. Micro SD, micro USB. 120 mA internal battery. 225x78mm. Operating from -20°C to +60°C.

Shipped with : 5200 mA 3,7V battery pack, destock cradle with power supply, hand strap, stylus and stylus attachment, USB cable.



Bumper
AT-CADS507



Gun
AT-CADS508



Desktop dock
AT-CADS502



4 slots batteries
charger
AT-CADS510

Reference	Processor	OS	Display	Barcode reader	Keyboard	RFID reader	Communication	IP rating / Drop	Weight
DS5	ARM Cortex A8 1 Ghz	Windows CE 6.0	3,5" QVGA restitive 410 Nits	Laser (SR/LR), Imager (SR/LR)	34 /54 keys	HF 13,56MHz (NFC)/ BF 125-134 kHz / UHF	3G, Wifi a/b/g/n, bluetooth 2.1, GPS, RFID	IP65 / 1,8m	470g
DS5	ARM Cortex A8 1 Ghz	Windows Mobile 6.5	3,5"VGA ou 4,3" WVGA 410 Nits	Laser (SR/LR), Imager (SR/LR)	34 /54 keys	HF 13,56MHz (NFC)/ BF 125-134 kHz / UHF	3G, Wifi a/b/g/n, bluetooth 2.1, GPS, RFID	IP65 / 1,8m	470g
DS5AX	Exynox5260 6 Core: Dual Core Cortex A15 1,7Ghz, Quad Core A7 1,3Ghz	Android 6.0 GMS	4,3" WVGA 410 Nits	Laser (SR/LR), Imager (SR/LR)	34 /54 keys	N/A	3G, Wifi a/b/g/n, bluetooth 2.1, GPS, RFID	IP65 / 1,8m	470g

2 choices of Keyboard, several OS choices, extremely rugged, several choices of barcode reader performance, gun accessory, different display sizes, various accessories.



DS6 4 GB RAM, 32 GB Flash-ROM. SD slot, Micro USB 3.0 type C. Rear camera 16 Mpx autofocus and flash. 76x154x18.7mm. Operating from -20°C to 60°C.

Shipped with : 4000 mA 3.7V battery pack, USB C cable, hand strap, screen protection, power supply.



Desktop Dock
USB Client and Host
DB9 RS232 connector.
AT-CADS603



Bumper
AT-CADS611



Gun
AT-CADS612



Hand strap
AT-CADS608

Processor	OS	Display	Barcode reader	RFID reader	Communication	IP rating / Drop	Weight
ARM Cortex A53 2 Ghz Octo Core 64 bits	Android 7.1 GMS	5" HD 720x1280 400 Nits	1D/2D imager	HF 13,56MHz (NFC)	4G LTE, Wifi a/b/g/n/ac, Bluetooth 4.0, GPS	IP67 / 1,5m ou 2m with bumper	275g

Ergonomic, high performance, removable battery, USB C, hand strap, various accessories.

Barcode reader and RFID



S2xxx Barcode reader in handheld format, 54x190x60 mm, resist to drop of 1,5 m on concrete floor. Operating from 0 to 40°C, 150g.

Shipped with : USB cable, user guide.

Product	Reference	Reading technology	Barcode	Reading distance	Connectivity	Interface
Scanner	AT-S2310	Linear Imager	1D	up to 28 cm	Wired and Radio	USB HID
Scanner	AT-S2510	Imager	1D/2D	up to 28 cm	Wired and Radio	USB HID

Simple to use, format, user-friendly, ergonomic, attractive price.



S3500 1D/2D barcode scanner, 170x85x70 mm, resist to drop of 2 m on concrete floor, IP54. Operating from -10°C to 50°C. 146g and 240g with USB cable.

Shipped with : USB cable, user guide.

Product	Reference	Reading technology	Code bars	Reading distance	Connectivity	Interface
Gun	AT-S3500	1D/2D Imager	1D/2D	up to 43 cm	Wired	USB HID

Simple to use, format, user-friendly, ergonomic, attractive price.



S4500 Omnidirectional counter reader with automatic detection. 90x70x140 mm. 395g. High reading speed: 2000 scans/sec

Shipped with : USB cable, quick start guide.

Product	Reference	Reading technology	Barcode	Reading distance	Connectivity	Interface
Fixed scanner	AT-S4500	Omni-directional laser	1D	up to 30 cm	Wired	USB HID

Compact and performant. Easy and fast USB connection.



RS102D Ring scanner barcode reader.

Shipped with : USB cable, Bluetooth USB adapter, setup CD, user guide.

Product	Ref	Reading technology	Barcode	Reading distance	Connectivity	Interface	Shipped with	IP rating / Drop	Weight
Ring Scanner	AT-RS10200	Imager	1D/2D	up to 24 cm	Bluetooth	HID SPP	USB cable, Quick start guide	IP54 / 1,5m	50g

Light, left-handed and right-handed compatible, simple to use.



RPT100 UHF sensor. Barcode. Bluetooth. BLUE OLED display of 1,3-inch. Resists to drop up to 1,8 m on concrete. IP68. Internal battery of 3300 mA.

Shipped with : wrist strap, Power adapter, USB cable

Product	Reference	Technology	OS	Weight
RFID reader UHF	RPT100	Bluetooth 4.1 BLE, UHF CE/FCC	Android, IOS and Windows	220 g

RFID UHF and 2D barcode reader, display and Bluetooth.



SR900 UHF/Bluetooth captor

Shipped with : Power adapter, USB cable.

Product	Reference	Technology	OS	Weight
RFID reader UHF	SR900	Bluetooth V2.1, USB 1.1, UHF CE/FCC	Android, IOS and Windows	170 g

cheaper, connects via USB or Bluetooth.

Software tools

Depending on the product and operating system you selected, you can have access to software tools that make it easier to use, deploy, and administer the device.

Kiosk mode

This software is mainly designed to lock the system. Users have no access on device features out of the scope of their software application.



RFID reader emulator

This software tool restores, in the active input area, the readen RFID tag code. It runs in the background after launch.

Software development toolkit (SDK)

Athesi provides a software development kit which gives to developers the possibility to manage directly some features like barcode scanner, RFID reader, smart card or magnetic card reader, 3D camera for the optimisation and the customisation of the software.



Auto Setup

This feature allows applications to be installed and configured automatically and identically on several terminals in an efficient way.

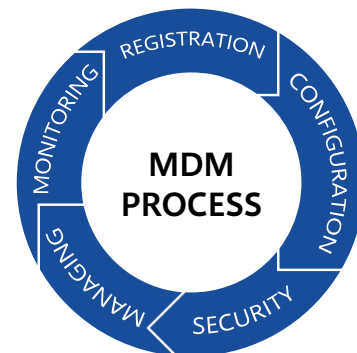
Auto Test

This integrated software tool is quite interesting for the first level of diagnostic. It allows testing one by one the hardware functionalities and to check if each function is working properly (Wi-Fi, barcodes, RFID, Display, Sensor...)



Mobile Device Management (MDM)

Athesi regularly certified his devices with the various editors according to the customer demand and their requirements. MDMs are powerful and complete tools for remote administration and monitoring of product.



Barcode reader emulator

This software tool restores, in the active input area, the readen and decoded barcode. It runs in the background after launch.



Terminal Emulation software

To better and easily use Athesi devices on some environment, it is possible to use a terminal like an emulator TNVT for example.



At a glance

X	Default	● E Series	● DSIC-Mobilebase
O	Optional	● R Series	● Gen2wave
-	Not available		

	Display	NITS	Android	Windows	Removable battery	1D/2D scanner	RFID NFC	4G LTE	GSM Voice	fingerprint reader	3D Camera	Smart card reader	Drop (m)	IP	Weight (g)	Desktop dock	Vehicle dock
DS4	3.5	550 520	-	CE Emb	X	O	-	O	-	-	-	-	1.8	65	320	X	-
RP1500	3.5	450	6.0	-	X	O	HF (NFC)	O	X	-	-	O	1.5	64	250	X	X
DS4A	4	450	7.1	-	X	O	-	O	X	-	-	-	1.8	65	340	X	-
DS5	4.3	410	-	Emb	X	O	O-HF(NFC) O-UHF	3G	-	-	-	-	1.8	65	470	X	-
DS5AX	4.3	410	6.0	-	X	O	-	3G	-	-	-	-	1.8	65	470	X	-
RP1600X	4.3	500	8.1	-	X	O	HF (NFC)	X	X	-	-	O	1.5	64	320	X	X
RP1600X EID10	4.3	500	8.1	-	X	O	HF (NFC)	X	X	O	-	O	1.5	64	495	X	X
SPA43	4.3	400	7	-	X	O	HF (NFC)	X	-	-	-	-	1.2	66	250	X	-
DS6	5	400	7.1	-	X	O	HF (NFC)	O	X	-	-	-	1.5/2	67	275	X	-
E5L	5	300	7	-	X	O	HF (NFC)	X	X	-	-	-	1.2	65	260	X	-
E5	5	400	7	-	-	O	HF (NFC)	X	X	-	-	-	1.7	68	245	X	-
E50	5	400	7.1	-	-	O	HF (NFC)	X	X	-	-	-	2	68	250	X	-
RT55	5.5	400	7	-	X	O	HF (NFC)	X	X	-	-	-	1.5	67	335	X	-
E6A	6	430	8.1	-	X	O	HF (NFC)	X	X	-	-	-	1.2	65	360	X	-
E6C	6	430	-	10	X	O	HF (NFC)	3G	-	-	-	-	1.2	65	360	X	-
RP70	7	700	-	10	X hot swapp	O	HF (NFC)	O	-	-	-	-	1.2	64	600	X	X
RP70A	7	700	8.1	-	X hot swapp	O	HF (NFC)	O	-	-	-	-	1.2	64	600	X	X
RP70ABIO	7	700	8.1	-	X hot swapp	O	HF (NFC)	O	-	O	-	O	1.2	64	850	X	X
E7B	7	1000	-	-	-	O	O-UHF	X	-	O	-	-	1.2	67	640	X	-
E7T	7	1000	8.1	-	-	O	X-HF(NFC) O-UHF	X	X	O	-	-	1.2	67	640	X	-
E8CL	8	320	-	10	-	-	-	X	-	-	-	-	1.2	67	630	-	-
E8TL	8	400	7	-	-	-	HF (NFC)	X	X	-	-	-	1.2	67	630	-	-
E8B	8	400	-	10	-	O	HF (NFC)	X	-	-	-	-	1.2	67	710	X	X
E8T	8	400	8.1	-	-	O	HF (NFC)	X	X	-	-	-	1.2	67	710	X	X
RT80	8	370	-	10	X hot swapp	O	HF (NFC)	O	-	O	-	-	1.5	65	910	X	X
RT80A	8	470	7.1	-	X hot swapp	O	HF (NFC)	O	-	O	-	-	1.5	65	910	X	X
E10CL	10.1	400	-	10	-	-	-	3G	-	-	-	-	1.2	65	920	-	-
E10TL	10.1	400	7	-	-	-	HF (NFC)	X	X	-	-	-	1.2	65	920	-	-
E10B	10.1	400	-	10	-	O	HF (NFC)	X	-	-	-	-	1.2	65	1210	X	X
E10T	10.1	400	8.1	-	X	O	HF (NFC)	X	X	-	-	-	1.2	65	1210	X	X
E10BK	10.1	400	-	10	X	O	HF (NFC)	X	-	-	-	-	1.2	65	1210	X	X
E10BC	10.1	400	-	10	X	O	HF (NFC)	X	-	-	-	-	1.2	65	1210	X	X
RT101	10.1	470	-	10	X hot swapp	O	HF (NFC)	O	-	O	O	-	1.5	65	1275	X	X
RT101A	10.1	470	9.1	-	X hot swapp	O	HF (NFC)	O	-	O	-	-	1.5	65	1275	X	X
E12B	12.2	300	-	10	X	O	HF (NFC)	X	-	-	-	-	1.2	65	1480	X	X
E12K	12.2	300	-	10	X	O	HF (NFC)	X	-	-	-	-	1.2	65	1480	X	X
RT122	12.2	800	-	10	X hot swapp	O	HF (NFC)	O	-	O	O	O	1.2	65	1955	X	X

Athesi

Mobile Generation

31 rue des Clotais
94360 Bry-sur-Marne
France

+33 1 83 64 57 40

info@athesi.com
www.athesi.com
 Athesi



Distributed by :



Aryan Comunicaciones S.A

 91657 48 48

 marketing@aryan.es

 www.aryan.es