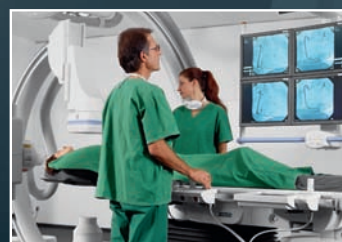
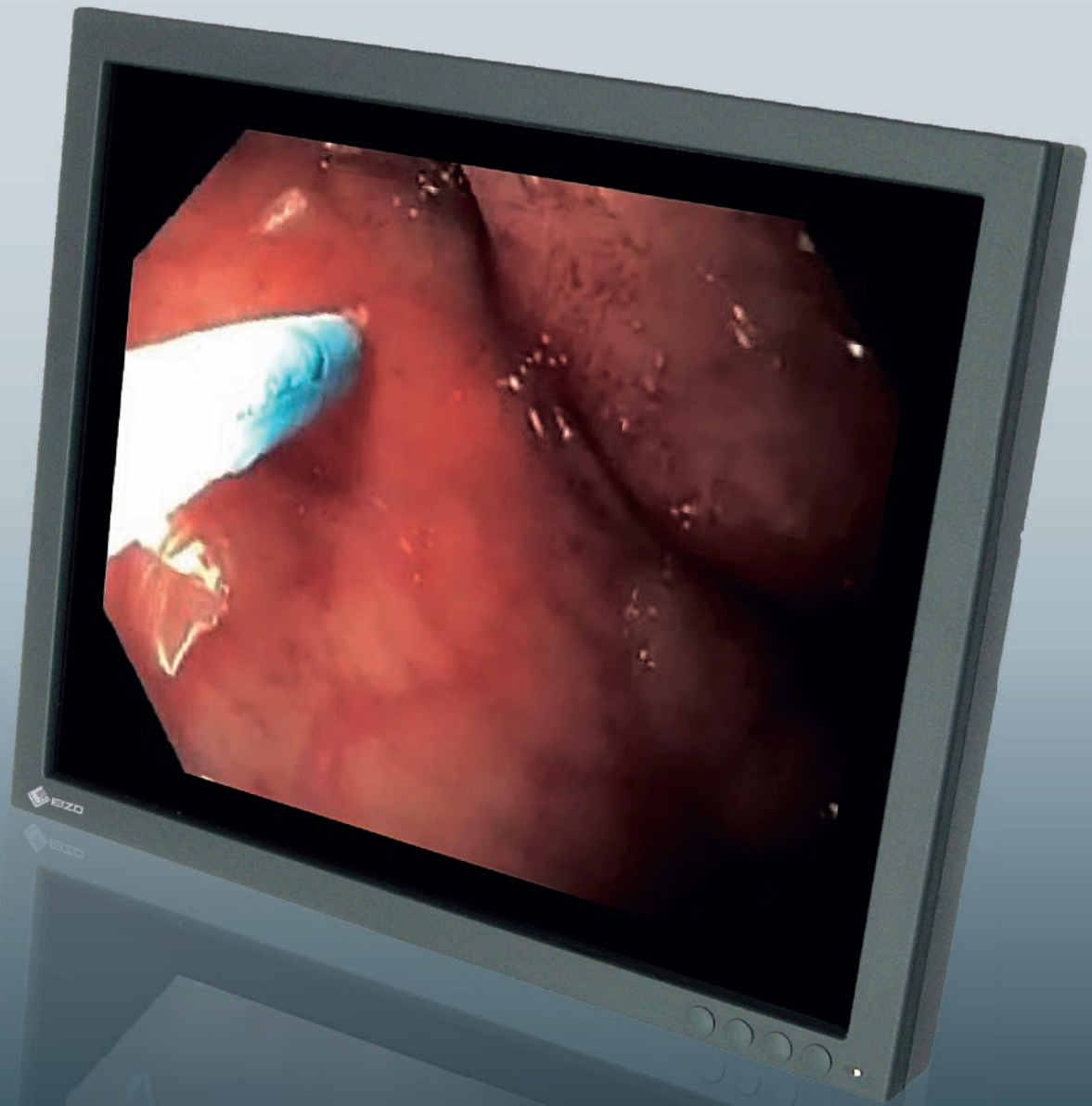




# SCD 19102

Surgical Monitor Solutions



# SCD 19102

1 MP 48 cm (19") Color LCD Monitor



The SCD 19102 produces color and gray scale images for the accurate, high-speed presentation of motion studies and dynamic images in endoscopy, surgery, cardiac imaging, and ultrasound.

- Fully automated luminance stability through the Integrated Stability System (ISS)
- CIE/DICOM compliant gray scale response built into the display
- Adjustable color point for optimized display matching
- Fully supported by the SMfit® Total Care family of quality assurance tools
- 5 user defined 10 bit look up tables adaptable to diverse reading and viewing environments
- Gamma response calibrated during manufacturing to provide consistent image quality from one display to the next
- State of the art video signal rendering; video standards: PAL, NTSC
- Force Mode for tailoring the display to even the most specialized timing requirements

| Monitor Performance               |  |
|-----------------------------------|--|
| Cabinet Color                     | Anthracite Gray  |
| Panel                             | Color, TFT, IPS, dual domain   |
| Active Display Size (H x V)       | 376 x 301 mm   |
| Viewable Image Size               | Diagonal: 481.9 mm   |
| Native Resolution                 | 1280 x 1024  |
| Pixel Pitch (H x V)               | 0.294 x 0.294 mm   |
| Grayscale Tones<br>Display Colors | 1024<br>8 bit (16.7 million colors)  |
| Viewing Angles (H, V)             | 170°, 170° (typical)   |
| Brightness                        | 280 cd/m <sup>2</sup> / 82 fl (typical)  |
| Calibrated Brightness             | DICOM, 125 cd/m <sup>2</sup> (36 fl)<br>CIE, 125 cd/m <sup>2</sup> (36 fl)<br>LINEAR, 160 cd/m <sup>2</sup> (47 fl)                              |
| Brightness Uniformity             | < 33 %   |
| Contrast Ratio                    | 600:1 (typical)  |
| Response Time                     | 25 ms (typical)  |
| LUT                               | 10 Bit   |
| Sensor                            | ISS (Integrated Stability System)  |
| Signal Properties                 |  |
| Scanning Frequency                | Analog: 30 - 100 kHz, 50 - 100 Hz  |
| Dot Clock                         | Analog: 135 MHz  |
| Signal Level / Sync Level         | 0.5 - 1.0 Vpp (75 Ω) / 0.15 - 0.3 V (10 kΩ)  |
| Signal Inputs                     |  |
| Connectors                        | DVI-I, 15pin-SubD, 4pin-MiniDIN, 1x-BNC  |
| Supported Signals                 | DVI (single link), RGB (DVI-I, 15pin-SubD),<br>G/H/V(15pin-SubD, DVI-analog), SoG (15pin-SubD,<br>DVI-analog), Y/C (4pin-MiniDIN), CVBS (1x-BNC) |
| Supported Formats                 | VGA, SVGA, XGA, SXGA<br>non-interlaced, interlaced   |
| Data Interface                    |  |
| Connectors                        | RJ11, 6pin-MiniDIN, DVI  |
| Supported Signals                 | RS 232-Bus, DDC  |

| Power Requirements                                      |   |
|---|---|
| Input Voltage   | 100 - 240 VAC, ±10%   |
| Power Frequency   | 50 - 60 Hz, ±5%   |
| Power Consumption                                       | < 58 W, Power Save Mode: < 8 W  |
| Power Management (analog)<br>Power Management (digital) | DPMS<br>DVI-DMPM  |
| Mechanical Specifications                               |   |
| Orientation   | Landscape or Portrait   |
| Mechanical Adaption                                     | VESA 100 x 100 mm   |
| Degree of Protection                                    | IP20<br>IP22 (front) for SCD 19102 CP   |
| Net Weight  | Without stand: 6.4 kg, with protective glass: 7.0 kg,<br>with stand: 11.4 kg                        |
| Dimensions (W x H x D)                                  | Without stand: 422 x 348 x 95 mm  |
| Climatic Conditions                                     |   |
| Operating Temperature<br>Within Specifications          | 5 to +40 °C ( 32 to +104 °F)<br>5 to +35 °C ( 32 to +95 °F)   |
| Storage Temperature                                     | -20 to +60 °C ( -4 to +140 °F)  |
| Approvals   |   |
| Certifications and Standards                            | EN60601-1, CSA C22.2 No.601.1, UL60601-1,<br>EN60601-1-2 limit B, FCC Class A, MPR II               |
| Accessories   |   |
| Supplied Accessories                                    | AC power cord, DVI single link cable,<br>documentation on CD  |
| Optional Accessories                                    | Multifunctional stand, fixed stand, DVI transmission line,<br>cable kit for SMfit, BNC to VGA cable |
| Warranty  |   |
| Standard Warranty                                       | 5 Years   |
| Model Variations  |   |
| SCD 19102 C (without stand)                             | 6GF6210-2EE10   |
| SCD 19102 CP (with protective<br>glass, without stand)  | 6GF6210-2EE20   |
| SCD 19102 D<br>(with multifunctional stand)             | 6GF6210-2EE01   |

